

# Wood Protection



**INNOVENT**

Technology Development

Research Department:  
Primer and Chemical  
Surface Treatment

Wood is a modern and versatile material with numerous applications. As part of the natural material cycle, wood is subject to biological degradation. For many applications it is therefore necessary to protect wood appropriately to delay this degradation. In Europe, domestic wood for permanent outdoor use can either be biocidally or increasingly biocide-free protected. In order to make an optimal selection for a specified application, the properties of the protected wood must be determined and classified

Two groups of methods have been established to determine the durability of wood-based products:

- Laboratory tests (e. g. against basidiomycetes as per EN 113 or against soft rotting according to EN 807) and
- Field investigations (e. g. earth burial tests according to EN 252)

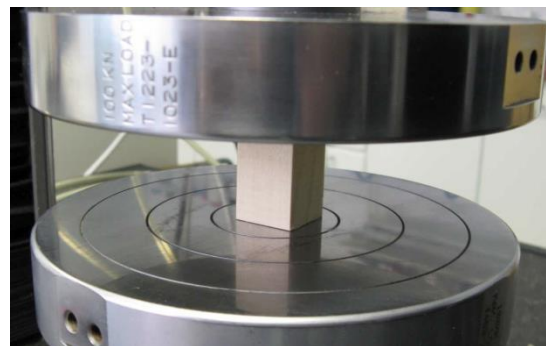
Based on the results and according to EN 350, durability classes are defined. Further important properties such as dimensional stability and swelling must also be determined for a targeted application.



Jaw – untreated and treated after 16 weeks of exposure with *conioophora puteana*



Soft rotting test according to DIN V ENV 807, 32 weeks trial period, determination of the mass difference



Determination of compressive strength parallel to the fibre and according to DIN 52 185

## Our range of services:

- Feasibility studies for impregnation and varnishing of domestic wood for outdoor use
- Testing of wood with regard to durability against fungal cultures and in the soft rotting test
- Stability studies by means of pressure tests, determination of density, moisture absorption and swelling of modified wood

Contact:  
INNOVENT e.V., Dr. Jörg Leuthäuser, Prüssingstr. 27 B, D-07745 Jena, Germany  
phone: +49 3641 282548; e-mail: JL@innovent-jena.de  
website: <http://www.innovent-jena.de>