

Analyze • Characterize • Investigate



INNOVENT

Technology Development

Research Department:
Primer and Chemical
Surface Treatment

INNOVENT possesses an advanced technical equipment that allows a comprehensive characterization of materials, composites, compounds and coatings.

The combination of the existing technology combined with many years of experience in the development of materials and composite systems allows us to determine a large number of characteristic values and to investigate complex issues such as the search for causes of damage due to material or compound failure.

The technical equipment can be used according to defined methods and standards and can also be adapted to your specific requests.

Surfaces

- Deformation stability (drop ball impact & mandrel bending test)
- Hardness tests (Shore & Buchholz)
- Microscopic investigation (atomic force & 3D microscopy)
- Spectroscopic analysis (IR (ATR) & Raman)
- Color and gloss level determination
- Coating thickness measurement
- Ultrasonic testing system
- Cross cutting test
- and others



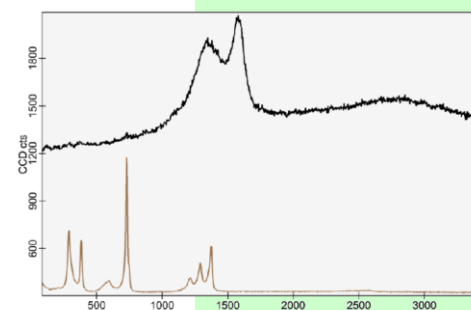
Materials and Composites

- Thermal analysis (DSC, DTA, TGA, DMA, TMA, dilatometer & thermal conductivity)
- Grind gages (Grindometer)
- Universal testing machines (determination of characteristic value using force-displacement measurements, e.g. tensile, bending, compression, peeling shear tests, in the temperature range from -170 to 250 °C)
- and further techniques



Resistance and Stability

- | | | |
|---|---------------------------------------|-----------------------------------|
| ■ Climate chamber (humidity & temperature adjustable) | ■ Thermal shock chamber | ■ Ozone stability |
| ■ High-performance drying cabinet | ■ Chemical resistance tests | ■ UV exposure & weathering stress |
| | ■ Corrosion test e.g. salt spray test | ■ and others |



Our range of services:

- Application of test methods and determination of characteristic values
- Evaluation of fracture pattern and quantification of the types of breakage
- Tests of compound stability (mechanical & environmental impact)
- Investigations on causes of damage



Contact:
INNOVENT e.V., Dr. Jörg Leuthäuser, Prüssingstr. 27 B, D-07745 Jena, Germany
phone: +49 3641 282548; e-mail: JL@innovent-jena.de
website: <http://www.innovent-jena.de>